

Parent Survey Report: One School in One Data Collection Period

School Name: Harrison Elementary School

Set ID: 15669

School Group: Brainerd/Baxter SRTS

Month and Year Collected: November 2016

School Enrollment: 0

Date Report Generated: 01/26/2017

% Range of Students Involved in SRTS: Don't Know

Tags:

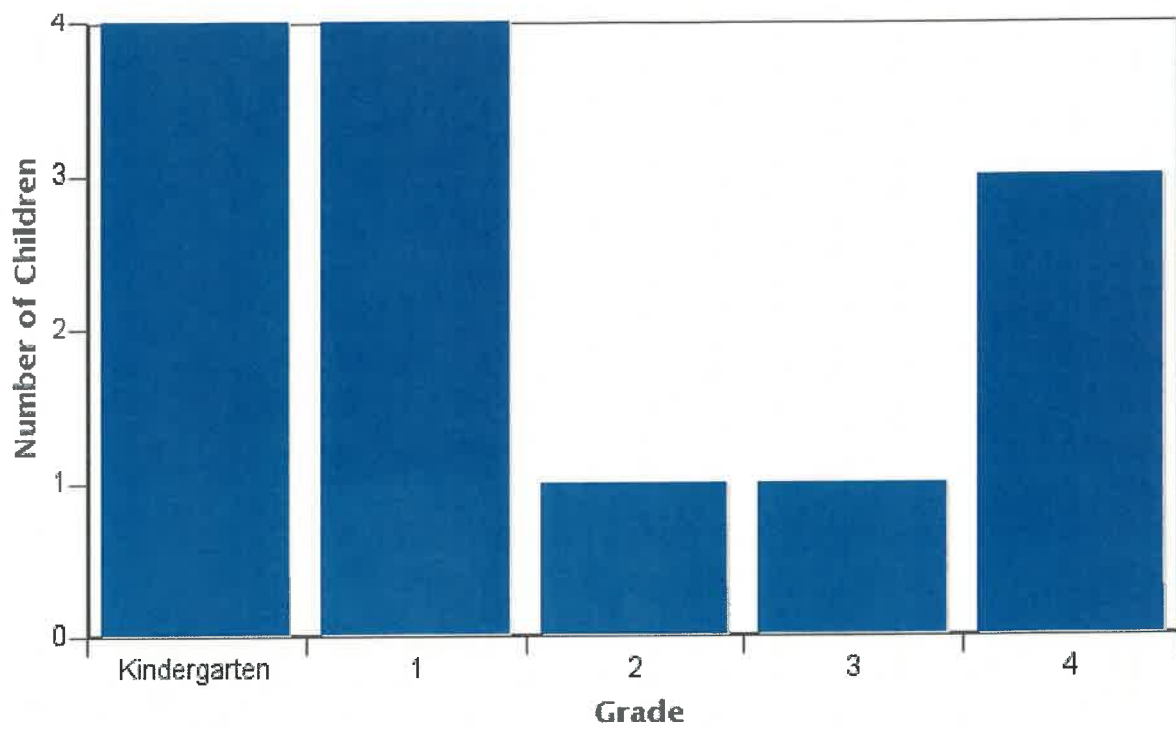
Number of Questionnaires Distributed: 0

**Number of Questionnaires
Analyzed for Report:** 13

This report contains information from parents about their children's trip to and from school. The report also reflects parents' perceptions regarding whether walking and bicycling to school is appropriate for their child. The data used in this report were collected using the Survey about Walking and Biking to School for Parents form from the National Center for Safe Routes to School.

**Because less than 30 questionnaires are included in this report, each graph and table display counts rather than percentage information.

Grade levels of children represented in survey

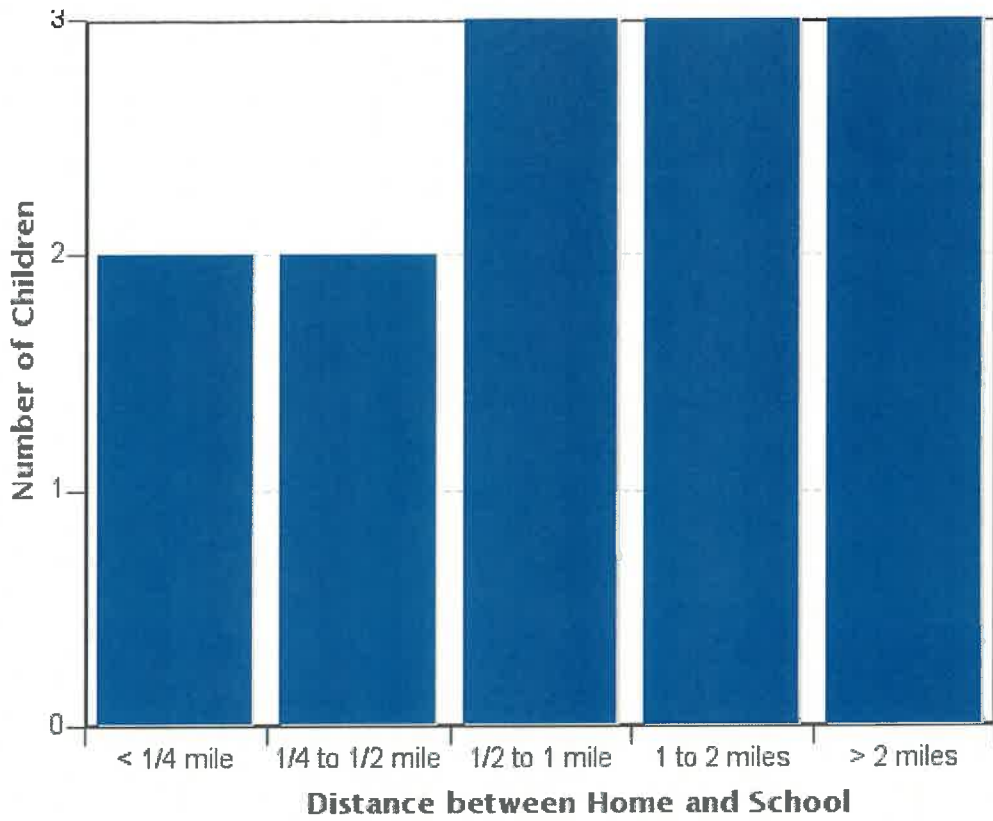


Grade levels of children represented in survey

Grade in School	Responses per grade
	Number
Kindergarten	4
1	4
2	1
3	1
4	3

No response: 0
 Numbers rather than percents are displayed because the number of respondents for this question was less than 30.

Parent estimate of distance from child's home to school



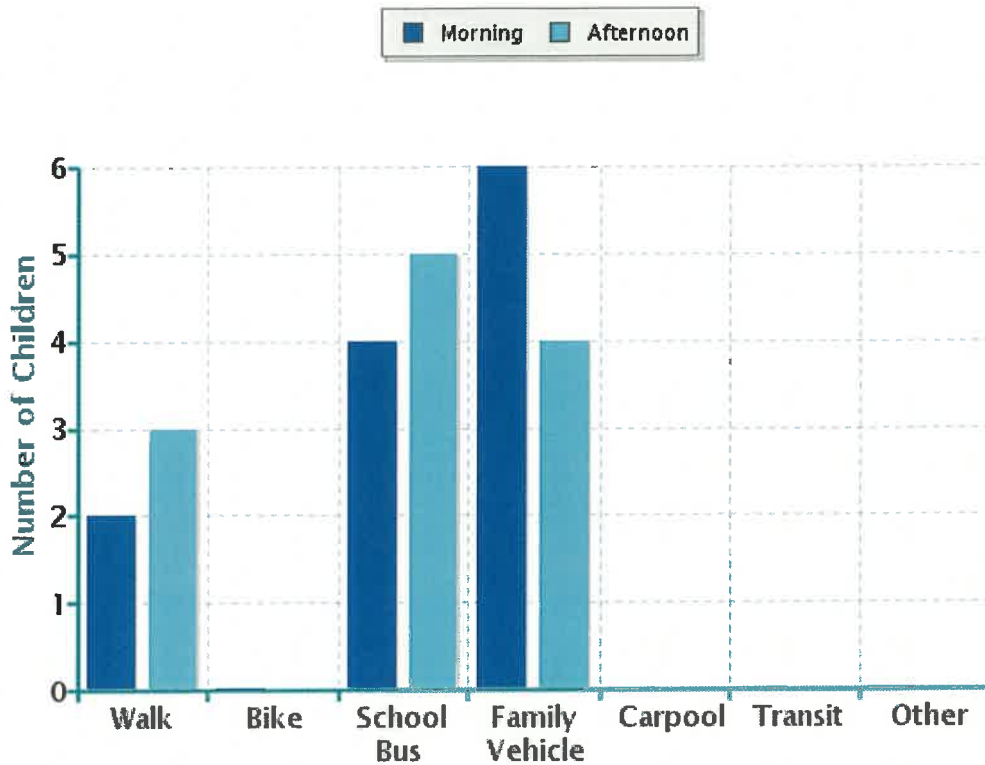
Parent estimate of distance from child's home to school

Distance between home and school	Number of children
Less than 1/4 mile	2
1/4 mile up to 1/2 mile	2
1/2 mile up to 1 mile	3
1 mile up to 2 miles	3
More than 2 miles	3

Don't know or No response: 0

Numbers rather than percents are displayed because the number of respondents for this question was less than 30.

Typical mode of arrival at and departure from school



Typical mode of arrival at and departure from school

Time of Trip	Number of Trips	Walk	Bike	School Bus	Family Vehicle	Carpool	Transit	Other
Morning	12	2	0	4	6	0	0	0
Afternoon	12	3	0	5	4	0	0	0

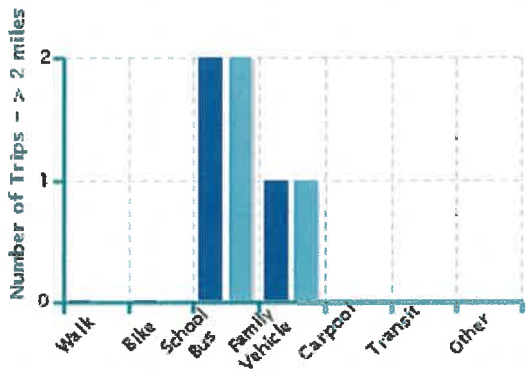
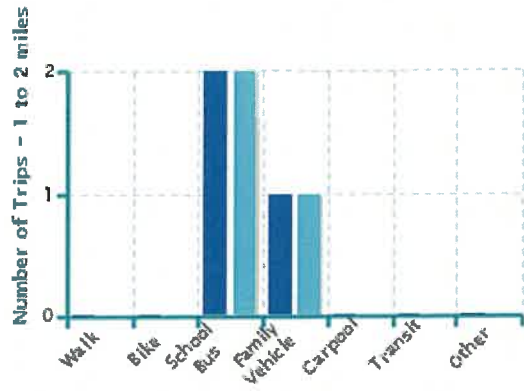
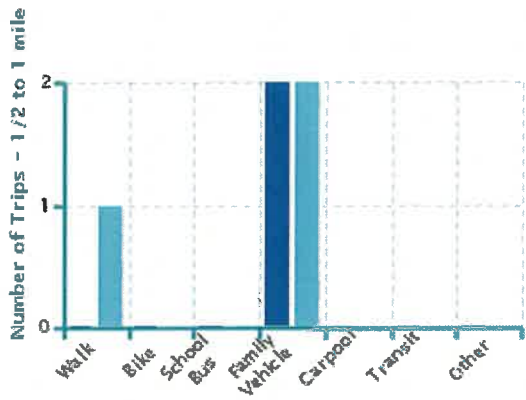
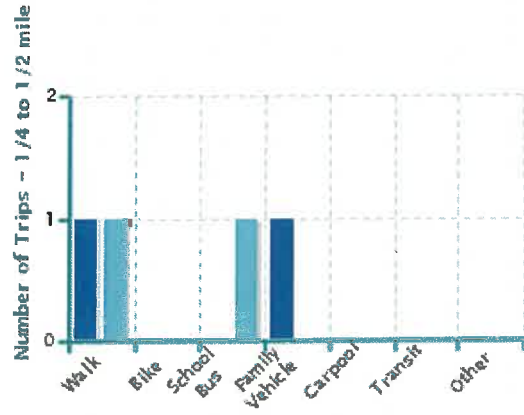
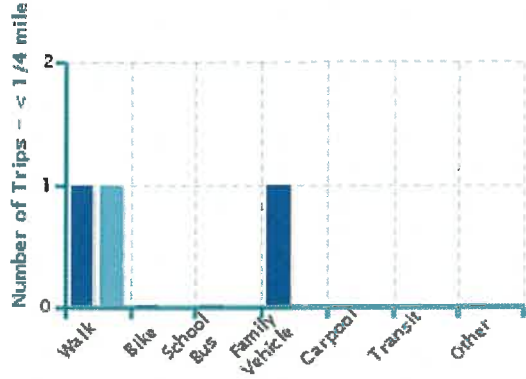
No Response Morning: 1

No Response Afternoon: 1

Numbers rather than percents are displayed because the number of respondents for this question was less than 30.

Typical mode of school arrival and departure by distance child lives from school

■ Morning ■ Afternoon



Typical mode of school arrival and departure by distance child lives from school

School Arrival

Distance	Number within Distance	Walk	Bike	School Bus	Family Vehicle	Carpool	Transit	Other
Less than 1/4 mile	2	1	0	0	1	0	0	0
1/4 mile up to 1/2 mile	2	1	0	0	1	0	0	0
1/2 mile up to 1 mile	2	0	0	0	2	0	0	0
1 mile up to 2 miles	3	0	0	2	1	0	0	0
More than 2 miles	3	0	0	2	1	0	0	0

Don't know or No response: 1

Numbers rather than percents are displayed because the number of respondents for this question was less than 30.

School Departure

Distance	Number within Distance	Walk	Bike	School Bus	Family Vehicle	Carpool	Transit	Other
Less than 1/4 mile	1	1	0	0	0	0	0	0
1/4 mile up to 1/2 mile	2	1	0	1	0	0	0	0
1/2 mile up to 1 mile	3	1	0	0	2	0	0	0
1 mile up to 2 miles	3	0	0	2	1	0	0	0
More than 2 miles	3	0	0	2	1	0	0	0

Don't know or No response: 1

Numbers rather than percents are displayed because the number of respondents for this question was less than 30.

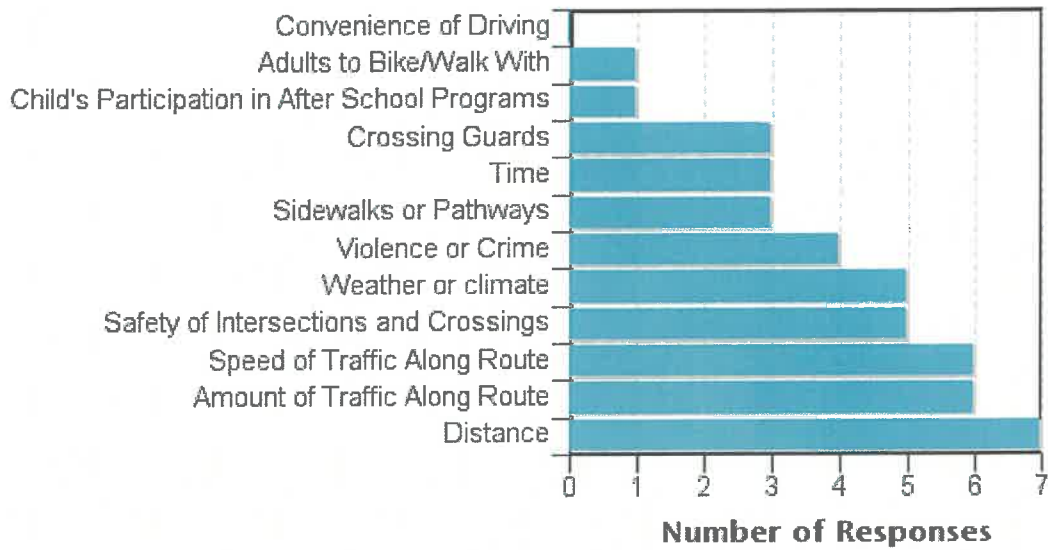
Number of children who have asked for permission to walk or bike to/from school by distance they live from school

Asked Permission?	Number of Children	Less than 1/4 mile	1/4 mile up to 1/2 mile	1/2 mile up to 1 mile	1 mile up to 2 miles	More than 2 miles
Yes	3	1	0	0	2	0
No	10	1	2	3	1	3

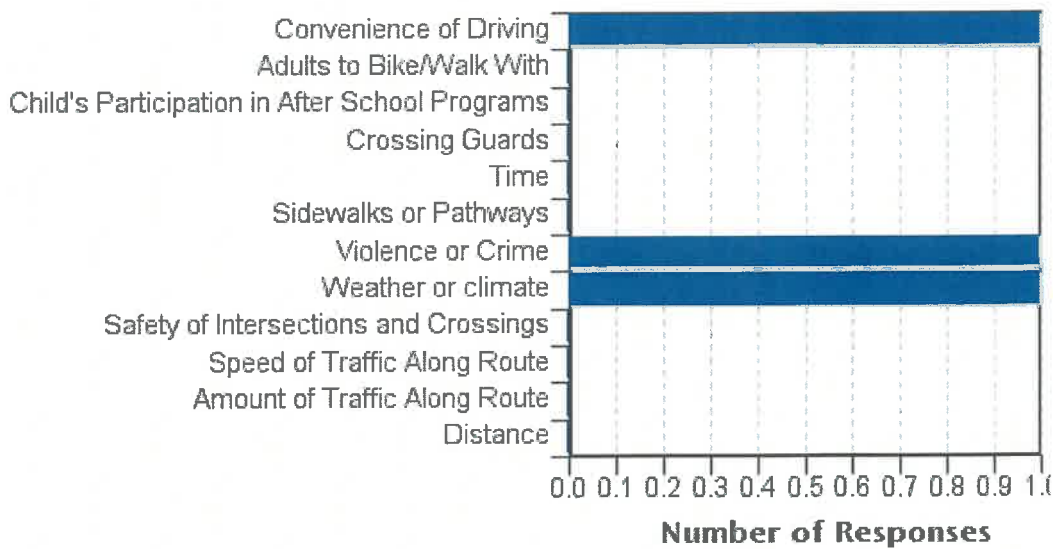
Don't know or No response: 0

Numbers rather than percents are displayed because the number of respondents for this question was less than 30.

Issues reported to affect the decision to not allow a child to walk or bike to/from school by parents of children who do not walk or bike to/from school



Issues reported to affect the decision to allow a child to walk or bike to/from school by parents of children who already walk or bike to/from school



Issues reported to affect the decision to allow a child to walk or bike to/from school by
parents of children who already walk or bike to/from school

Issue	Child does not walk/bike to school	Child walks/bikes to school
Distance	7	0
Amount of Traffic Along Route	6	0
Speed of Traffic Along Route	6	0
Safety of Intersections and Crossings	5	0
Weather or climate	5	1
Violence or Crime	4	1
Sidewalks or Pathways	3	0
Time	3	0
Crossing Guards	3	0
Child's Participation in After School Programs	1	0
Adults to Bike/Walk With	1	0
Convenience of Driving	0	1
Number of Respondents per Category	9	1

No response: 3

Note:

--Factors are listed from most to least influential for the 'Child does not walk/bike to school' group.

Parents' opinions about how much their child's school encourages or discourages walking and biking to/from school

Level of support	Number of children
Strongly Encourages	1
Encourages	0
Neither	10
Discourages	0
Strongly Discourages	2

Parents' opinions about how much fun walking and biking to/from school is for their child

Level of fun	Number of children
Very Fun	0
Fun	0
Neutral	8
Boring	0
Very Boring	3

Parents' opinions about how healthy walking and biking to/from school is for their child

How healthy	Number of children
Very Healthy	5
Healthy	5
Neutral	2
Unhealthy	0
Very Unhealthy	0

Comments Section

SurveyID	Comment
1485795	Due to weather conditions, high traffic, little sidewalks, virtually no street patrol past one corner, my child will not be walking. We live nearly a mile a way and cannot get bussing because we are just under a Mike and it is frankly ridiculous. We also have transportation issues at home which make it quite hard to get our daughter to school on time and bussing would allow her to avoid this trouble every day along with additional social interaction.
1485791	Sidewalks aren't clear in winter and neighborhood isn't safe. Busing should be an option for all children
1485802	I see k-2 grade kids walking around Harrison, I would never let my child walk alone in that neighborhood, for safety...most times the kids are confused as to when to cross the street and are easily distracted while walking.
1485797	I really dislike the fact that the children have to line up outside as opposed to going right in the building before the bell.
1485824	This survey is written as if I was given a choice whether or not to let my children walk to school. My children are not ALLOWED to ride a bus to school because we live 9 tenths of a mile from the school. I make arrangements to never allow my child to walk alone to or from school. My child walks past a bus stop that goes to Harrison however we are not allowed to use the bus. It's unfair and unsafe that my children have to walk to and from school.